



Caves, Coves and Cliffs - Geography Knowledge Organiser

I can use this key vocabulary and understand what it means.

Key Vocabulary	
local area	Nearby.
national	Within the same country.
resort	A popular place for holidays.
tourist	Someone who travels or visits a place for pleasure.
feature	An interesting or important part.
physical feature	A feature that has been formed by nature.
human feature	A feature that has been made or changed by humans.
continent	A very large area of land that includes all the islands with it.
ocean	A large area of sea.
population	The number of people that live in a particular place.
landmark	A well-known building or place.
equator	An imaginary line drawn around the middle of Earth, dividing it into the Northern and Southern Hemispheres.
tropical	Hot and humid.
temperate	Mild weather. Neither very hot nor very cold.

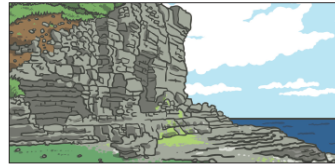
United Kingdom (UK)	England, Scotland, Wales and Northern Ireland.
attractions	Things to see and do.
bay	Part of the coast where the land curves in and is surrounded by the sea on three sides.
harbour	A place where ships or boats moor (tie-up).
climate	Weather.
Climate change	Big change in the weather over a long time, now made worse by human pollution.
Environment	The area in which something exists or lives.
Global warming	Change in the climate that makes the world warm up. Global warming is caused by pollution made by humans.
Pollution	Harmful chemicals or gases that spoil the environment.

I know the physical features of the UK coastline. I know the physical features of a polar coastline. I can compare physical features of coastlines. I know and can compare human characteristics of coastlines.



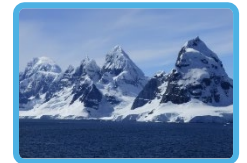
Physical Features of the Seaside

A seaside resort has many **physical features**. **Features** such as the beach, the sea, cliffs and caves have been made naturally. This means they were made by nature.



Human Features of the Seaside

Human features found at the seaside might include the **pier**, the **promenade**, a lighthouse and a fairground. These **features** are all man-made.



I know physical features include water, and most of that water is frozen, glaciers and icebergs. I know human features include research stations and cruise ships.

I know and can explain how creatures in the ocean and polar regions are treated and offer explanations about the fairness of this.

There are lots of different animals that live in the polar regions. They all have special adaptations (skills or features they have developed) which allow them to live in such cold temperatures. Animals in the polar regions are at risk of dying due to global warming.

Lots of different animals live in the ocean. Animals living in the ocean are at risk due to plastic pollution and overfishing, meaning that there are too few fish left in the ocean.