

Welcome to

Aston Lodge Primary School



**Aston Lodge
Primary School**

Show Pride • Reach for the Stars



Show Pride,
Reach for the
Stars!

Contents



office@Astonlodgeprimary.org



Astonlodgeprimary.org



0114 2872432



Aston Lodge Primary School



Aston_lodge



Aston_lodge

3. Welcome to Aston Lodge Primary School

4. Friendly Faces

5. The Early Years Foundation Stage

7. Starting School

9. Coming to School

10. Home Time

10. Absences

11. School Uniform

12. Class Dojo

13. Phonics

14. Useful Information

15. Key Workers

16. Foundation Unit Library

16. Chestnut

17. Parents Evening

17. 30 Hours Funding

18. Pupil Premium

Welcome to Aston Lodge Primary School

Aston Lodge Primary School is a warm and welcoming school with a family atmosphere. Our children are at the very heart of everything we do and are valued as individuals.

Our vision is to help children become happy, self-confident, independent and responsible learners. We will work together with parents and our school community to help children achieve their potential by providing a nurturing, caring and safe environment where we respect and value each other's strengths and differences.

We hope that our welcome pack answers any questions you may have with regards to your child joining the Aston Lodge family.



Friendly Faces at Aston Lodge

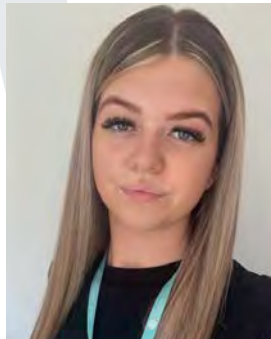


Miss Tims

EYFS Leader, FS2 Teacher and Deputy
Safeguarding Officer

Mrs Fearn

Lead FS1 Practitioner



Miss Blakemore

FS1 Nursery Practitioner

Miss Wilks

FS1 Nursery Practitioner



Mrs Broadhead

Teaching Assistant for FS2



The Early Years Foundation Stage

Our curriculum is based on the National Early Years Foundation Stage (EYFS) curriculum. It is known as the framework for learning, development and care for children from birth to 5 years. It details the knowledge, skills and understanding which young children should have acquired by the end of the F2 (Reception year). These are known as the Early Learning Goals (ELGs). The curriculum within the Early Years Foundation Stage is planned around four main themes:

A Unique Child	Positive Relationships	Enabling Environments	Learning and Development
Every child is a unique child who is constantly learning and can be resilient, capable, confident and self-assured.	Children learn to be strong and independent through positive relationships.	Children learn and develop well in enabling environments, in which their experiences respond to their individual needs and there is a strong partnership between practitioners and parents and carers.	Children develop and learn in different ways. The framework covers the education and care of all children in early year's provision, including children with special educational needs and disabilities.

Sessions are planned to ensure opportunities for development in the seven areas of development which are:

Areas of Learning and Development	Aspect
Prime Areas	
Personal, Social and Emotional Development	Making relationships
	Self-confidence and awareness
	Managing feelings and behaviour
Physical Development	Moving and handling
	Health and self-care
Communication and Language	Listening and attention
	Understanding
	Speaking
Specific Areas	
Literacy	Reading
	Writing
Mathematics	Numbers
	Shape, space and measures
Understanding the World	People and communities
	The world
	Technology
Expressive Arts and Design	Exploring and using media and materials
	Being imaginative

The Characteristics of Effective Learning, which move through all areas of learning underpin learning and development across all areas and support the child to remain an effective and motivated learner.

Characteristics of Effective Learning		
Playing and Exploring - Engagement	Active Learning - Motivation	Creating and Thinking Critically - Thinking
Finding and exploring. Playing with what they know. Being willing to have a go.	Being involved and concentrating. Keeping trying. Enjoying achieving what they set out to do.	Having their own ideas Making links. Choosing ways to do things.

Starting School

Thank you for choosing Aston Lodge Primary School. We understand that starting school is a huge milestone in your family life and we aim to make this transition as happy as possible. We can't wait to get to know your child and we do this by offering a relaxed and engaging environment where children are able to play.

Your child has been allocated a:

Morning session: **8:30am – 11:30am**

Afternoon session: **12:15pm – 3:15pm**

Children can stay for dinner, this is an additional charge and for them, nursery will finish at 12:15pm. Hot dinners are charged at £3.18, this includes a £1 charge for the dinner time supervision. If you would prefer your child to bring in a homemade packed lunch there is a £1 charge for the dinner time supervision.

Children can start Nursery the term after they turn 3. At this point children will receive either 15 hours or 30 hours funding depending on family circumstances. Children are able to start earlier (as soon as they turn 3), these sessions are at a cost of £12 per session until the term after their third birthday. Please ask a member of staff if you require any clarification.



Coming to School

Morning session children enter school via the gate directly outside their classroom. Please collect your child at home time from their classroom at 11.30am. A member of staff will meet you at the classroom door.

Afternoon session children enter school via the gate directly outside their classroom. Please collect your child at home time from their classroom at 3:15pm. A member of staff will meet you at the classroom door.

Please encourage your child to bring their book bag every day too. Toys should be left at home to avoid anything getting lost.

As the children arrive at the Foundation Unit we have a 'self-registration' system. The children will come in and find their name and place it on their photograph to show they are present.

In a morning, we encourage the children to choose a book in our daily book vote before having a go at their task with their parent/carer/adult. The task books alternate from a general task on the week's topic to name formation, we understand that for many this will just be a 'mark' on the paper but as the weeks and months pass by you will start to see your child progress.

The practitioners will ring the chime at 8.40 and the children will be asked to put their task books away before coming to sit on the carpet.



Home Time

Under the EYFS and School Safeguarding procedures we have an obligation to only hand over children into the care of individuals named by the parent/carer. As part of our policy we ask that you provide photographs of any adults authorised to collect your child.

These photographs will be kept in your child's file within the Unit for staff to refer to. If an individual turns up whom the parent/carer has not named and staff have no image of, we will be unable to hand over the child into their care.

Absences

Accepting a Foundation place means ensuring your child attends regularly. If your child is ill and unable to attend school, please contact the school office informing us of the reason for your child's absence. You can also contact the class teacher via Class Dojo. If a child is absent for a long unexplained period of time, then their place may be allocated to another child on our waiting list.

Uniform

Girls are encouraged to wear: Grey/black/navy skirt or pinafore or trousers, pale blue polo shirt and navy sweatshirt/cardigan with school badge. Girls are welcome to wear blue gingham dresses during the Summer months too. We encourage sensible black school shoes as opposed to sandals.

Boys are encouraged to wear: Grey/ black/navy trousers or shorts, pale blue polo shirt and navy sweatshirt with school badge.

A school book bag is highly recommended

Aston Lodge Primary School logo polo shirts, sweatshirts and book bags are available from Pinders Schoolwear, who can be found in Aston, Crystal Peaks and Rotherham Market.

Please ensure you label absolutely everything! We cannot tell you how many items are lost as a result of no name being written inside!



Class Dojo Portfolios

Class Dojo is an app used to communicate effectively with parents and guardians. We notify you when your child has been rewarded with a Dojo point linked to our Aston Lodge Ways. You are able to message your child's class teacher with any queries too.

In Foundation Stage 1, practitioners will carry out snapshot observations of your child and record them on their Class Dojo portfolio to keep you updated on your child's development. You will receive an invite to your child's Class Dojo account once they have started Nursery.

We love to learn more about what your child has been up to at home. This helps us to develop an even better understanding of your child's development and we use the information you provide us with to inform our assessments. Therefore, we encourage you to also add to your child's portfolios with any out of school achievements such as dancing or swimming certificates or key milestones such as learning to ride a bike. You can do this by uploading photographs to their portfolio via the Dojo app. Additionally, we love to see fun days out you have had such as birthdays, Christmas and any other special occasions. This then becomes a shared portfolio that really does track the progress and development of your child's time in FS1. Your contributions are just as important as ours.

Phonics

At Aston Lodge, we teach Ruth Miskin's 'Read Write Inc' phonics programme. Early phonics skills are taught through focusing on developing the children's listening skills, vocabulary and speaking skills. In Foundation 1 children are taught:

- Environmental sounds
- Instrumental sounds
- Body percussion (e.g. clapping and stamping)
- Rhythm and rhyme
- Alliteration
- Voice sounds
- Oral blending and segmenting (e.g. hearing that d-o-g makes 'dog')

Typical activities for teaching phonics in F1 include listening walks, playing and identifying instruments, action songs, learning rhymes and playing games such I Spy until we feel they are ready for Read, Write, Inc.



Maisie, mountain, mountain



Around the apple and down the leaf



Slither down the snake



Around the dinosaur's bottom and up to his neck



Down the tower, across the tower

Useful Information

Snack

Children have access to a snack during their time at nursery, there is always a choice of milk, water, fruit and cereal. On special occasions such as birthdays, we may share a treat they have brought in.



Baking

We ask that parents/carers contribute just £6 a year to help towards the cost of baking, which is equivalent to £1 each half term. Baking is a fun activity in which the children will be actively participating in, they will be learning all about ingredients, measuring and most importantly taking their delicious creations home to enjoy! We kindly ask that this is paid in full during the first half term.



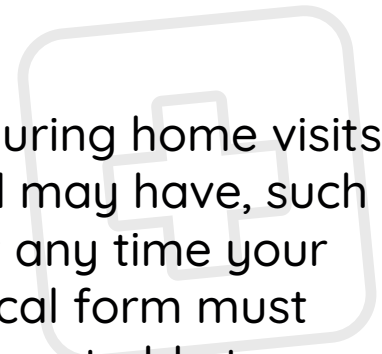
Toilets

We encourage children to be as independent as possible in managing their own needs.

However, we do recognise that this isn't always possible and we do have changing facilities, especially as we know that accidents can happen. We will speak to parents about children's individual needs during home visits.

Medical

We will speak to all parents individually during home visits and discuss any medical needs your child may have, such as asthma, allergies and medication. If at any time your child needs prescribed medicines, a medical form must be completed at the school office. We are not able to administer non-prescribed medicines.



Key Workers

‘A key person has special responsibilities for working with a small number of children, giving them the reassurance to feel safe and cared for and building relationships with their parents.’

(The Early Years Foundation Stage 2007)

Your child's 'Key Worker' will be allocated when they start F1 and you will be informed on this after their initial transition. Your child's Key Worker will be observing your child on a regular basis and put together their Class Dojo portfolio. However, we are all there for you to discuss concerns with or share achievements so if your child's Key Worker is not available and you wish to discuss something, please feel you can talk to any member of staff as we work as part of a team.

Foundation Unit Library

At Aston Lodge we encourage our children to develop a love for reading and reading for pleasure. This starts from the moment they join our Nursery.

Within our Foundation Unit we ensure to plan our curriculum around high quality and engaging texts. We have a tuff tray which focuses play around a familiar story and encourages the children to re-enact the story, building on their vocabulary and communication skills.

We also have a library basket for the children to be able to choose a book to take home to share with their family.



Chestnut

In F1 the children have a cuddly bear called 'Chestnut'. Once the children are settled the toy will go home with a different child each weekend/school holiday as part of our Pride award.

The toy comes along with his diary for you to record what he has been up to! A lot of children have taken photographs this year – and his albums are expanding!

This project also helps to develop the children's speaking and listening skills as they feedback to the rest of classmates what they have been up to.



Parents Evening

Parent's evenings will take place during the autumn and spring terms. If you feel that you need to discuss any problems or issues at any other time throughout the year, then an appointment can be arranged.

30 Hour Funding Information

Currently all three and four-year olds are entitled to 15 hours a week of free early learning (from the term after their 3rd Birthday). From September 2017 this was doubled to 30 hours for working families. This equates to 4 and a half full days with us.

Am I eligible?

- To qualify, both parents need to be working (the sole parent must be working in a single parent family) and each parent earns on average:
 - A minimum equivalent to 16 hours per week at minimum wage or National Living wage.
 - Less than £100,000 per year.
- Families where one parent does not work or neither parent works will not usually be eligible unless:
 - Both parents are employed but one, or both parents is temporarily away from the workplace on maternity or paternity leave, adoption leave or statutory sick pay.
- One parent is employed and one parent has substantial caring responsibilities based on specific benefits received for caring.
- One parent is employed and one parent is disabled or incapacitated based on receipt of specific benefits.
- You can apply for the 30 Hours Free Childcare at www.childcarechoices.gov.uk
- You will need to bring your unique allocated code in order for us to organise your child's 30 hours at Aston Lodge Primary.

Pupil Premium

Your child could be entitled to extra funding at school called Pupil Premium. This means you would receive a significant discount on things like School Excursions and school meals would be provided free of charge. Please follow the link below for further details.

<https://www.rotherham.gov.uk/xfp/form/532>

We hope both you and your child will enjoy the experience that our Foundation Unit offers, and that your child will be very happy during their time with us!



Aston Lodge
Primary School

Show Pride • Reach for the Stars